



INSTRUCTION

www.sitelite-lasers.com

WARNING !

UNLOAD YOUR FIREARM BEFORE BORESIGHTING!



Actual Photo of
What Can Happen if You
Do Not Heed This Warning !

DO NOT ASSUME THAT IT IS UNLOADED... PHYSICALLY CHECK THE CHAMBER TO BE SURE!

WARNING ! UNLOAD FIREARM BEFORE PROCEEDING!

Physically Check Firearm-Do Not Assume it is Unloaded

BORESIGHTING INSTRUCTIONS

1. Place the target on a wall 25 feet from the muzzle.
2. The firearm must be secured and clamped into position with the muzzle located at 25 feet from the target. The barrel should be level in relation to the target.
3. Install the proper o-ring and screw on the Muzzle Adapter, as required (see Muzzle Adapter Instructions). Insert the boresighter all the way into the muzzle, with the arrow aligned with the top center of the barrel.

Lubricate the o-ring with Vaseline or silicone grease before inserting. Do not use gun oil. Some oils will swell and deteriorate the o-ring.

4. Set the scope at low power and switch on the boresighter. Adjust the position of the firearm to center the laser within the "Laser Target" located below the dotted line crosshair on the target (See Fig. 1.)

Note: The laser spot, projected on the target, will normally range in size from 1/2" to 3/4" in diameter. This provides for easier alignment on the target.

5. Insure that the firearm does not move and that the laser remains centered in the target while making adjustments. Adjust the scope crosshairs or other type sights to align as shown in Fig. 1 & 2

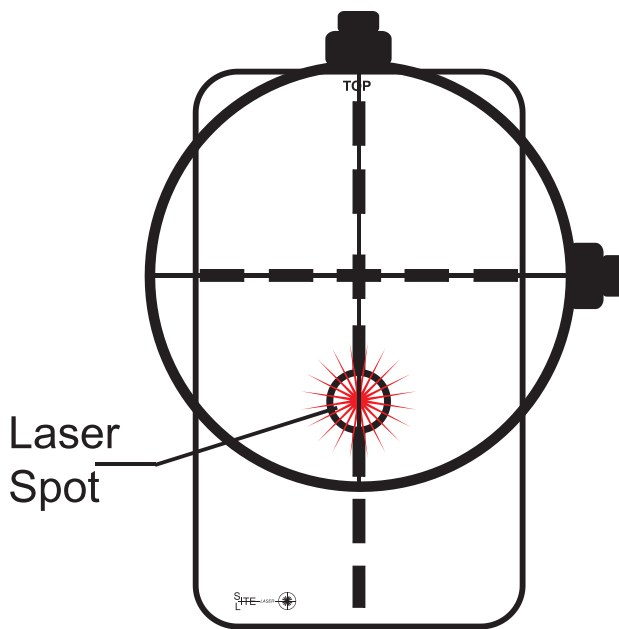


Fig. 1

Properly boresighted scope with laser spot on "Laser Target" and scope crosshairs on dotted lines above the laser spot

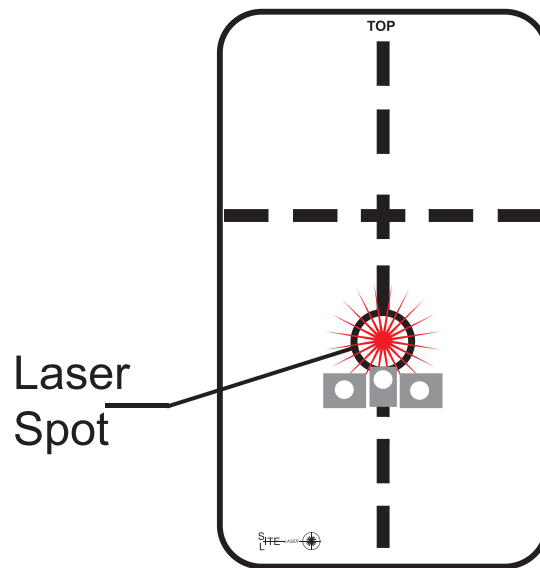


Fig. 2

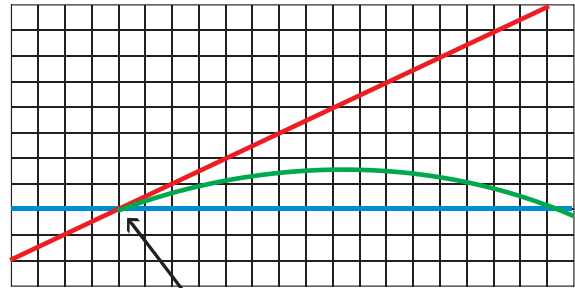
Properly boresighted iron sights with laser spot on "Laser Target"

6. Complete sighting in the firearm at the range, taking the first shots at no more than 50 yards to make your initial adjustments.

PREFERRED BORESIGHTING METHOD



Ballistic Targeting System



**Calculates Exact Placement
of Laser Spot on the Target
for Precise Sight Alignment**

**Automatically Calculates and Prints a Target for your Specific Requirements...
You can use any boresighting distance, depending on the space you have
available, for any range you choose...up to 300 Yards !**

"I was immediately impressed with the ballistics program. Using it to create targets, I zeroed in two rifles. The first had already been sighted in and the Sitelite confirmed this. This morning I took the other, which had not been sighted in, to the range and it shot dead on without any adjustment. That is impressive." Gene A. Miceli

The optional method uses the laser boresighter ***Ballistic Targeting System (BTS)*** Software Program to create custom boresighting targets for your specific requirements. It is the most accurate laser boresighting method available.

The ***BTS*** Software Program is available for download, from www.sitelite-lasers.com, at no charge, for our customers.

Email us with your SiteLite Laser Boresighter Serial Number and we will email the User Name & Passwords required to download the software program.

NOTE: NOT COMPATIBLE WITH MAC COMPUTERS

MUZZLE ADAPTER INSTRUCTIONS

The Muzzle Adapters (MA-1 & MA-2) use various size o-rings to align the boresighter within the center of different caliber bores. Refer to the O-ring to Caliber Selection Chart for the proper o-ring. The proper o-ring should enter the bore with light to moderate drag when lubricated. The MA-1 Adapter is used for all calibers from .22 to 7mm (.284 cal.) O-rings are put in position "B" as referenced on the chart. The MA-2 Adapter is used for all calibers from .308 to .50 caliber. O-rings are put in position "A" as referenced by the chart. The MA-2 Adapter has additional o-ring grooves that are not referenced on the chart. These grooves are graduated in size and are provided to compensate for varying tolerance bores and calibers not referenced on the chart. Use these grooves, as required, to insure that the o-ring enters the bore with the proper drag (Example: if the o-ring on "A" is too loose in the bore move it to the next groove to the right to enlarge it, slightly. If it is too tight, move it to the left) Always lubricate the o-ring with silicone grease or Vaseline (Vaseline is recommended) before inserting into the bore. **Check the bore to make sure that it is clear of any o-rings after boresighting.**

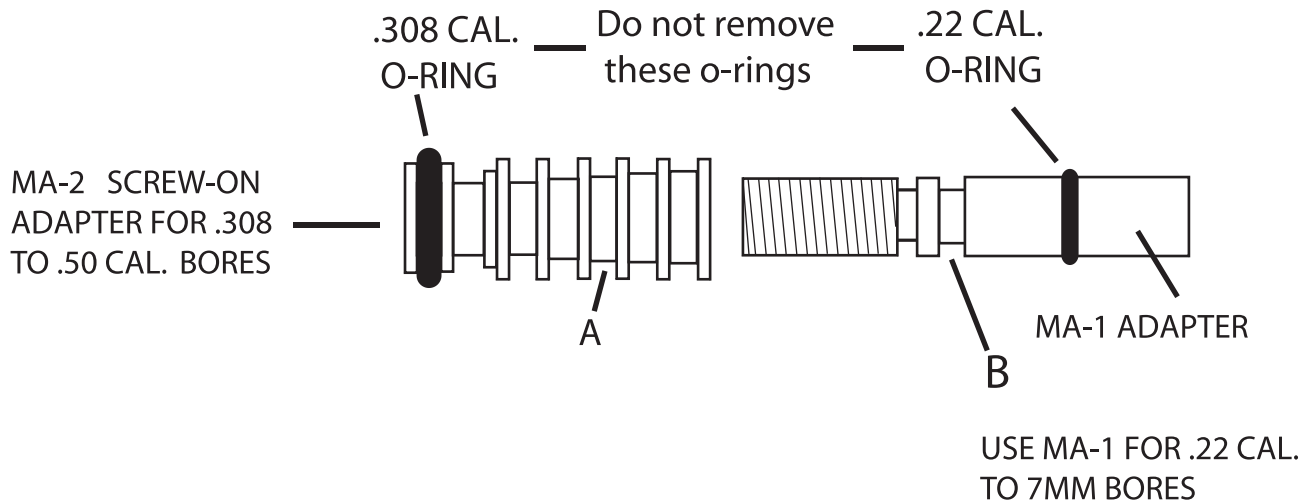
NOTE: The adapters were conveniently designed so that the .308 and .22 caliber o-rings never have to be removed, since these are the most popular calibers. The .308 o-ring is used for .30-30, .30-06, .300 Win Mag, .300 WSM, .300 savage, .308 Win. and 7.62mm bores, etc. The .22 caliber o-ring is used for .22, .222, .223, .22-250, and 5.56mm bores, etc.

The Shotgun Adapter (MA-3) fits 20 GA .and 12 GA. shotgun bores. The .20 GA. o-ring does not have to be removed. The 12 GA. o-ring is put in position "C". The other grooves are used to compensate for varying tolerance bores.

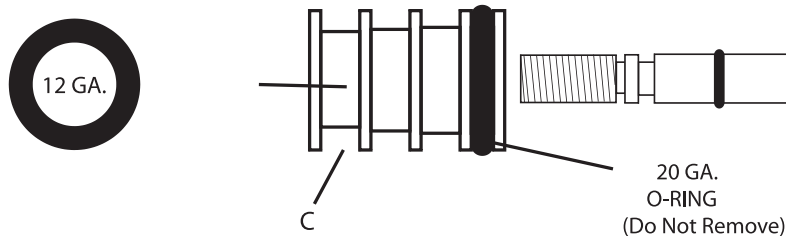
O-RING TO CALIBER SELECTION CHART

 .243 CAL. ON MA-1 "B"	 .25 TO .270 CAL. ON MA-1 "B"	 .284(7MM) ON MA-1 "B" .323 (8MM) TO .338 ON MA-2 "A"	 .35 CAL. & 9MM ON MA-2 "A"	 .375 CAL. ON MA-2 "A"	 .40 CAL. ON MA-2 "A"	 .44 CAL. ON MA-2 "A"	 .45 CAL. ON MA-2 "A"	 .50 CAL. ON MA-2 "A"
---	--	---	--	---	---	--	--	--

Match O-Ring to Chart



NOTE: A spare .22 cal. O-ring is provided (not shown on chart)



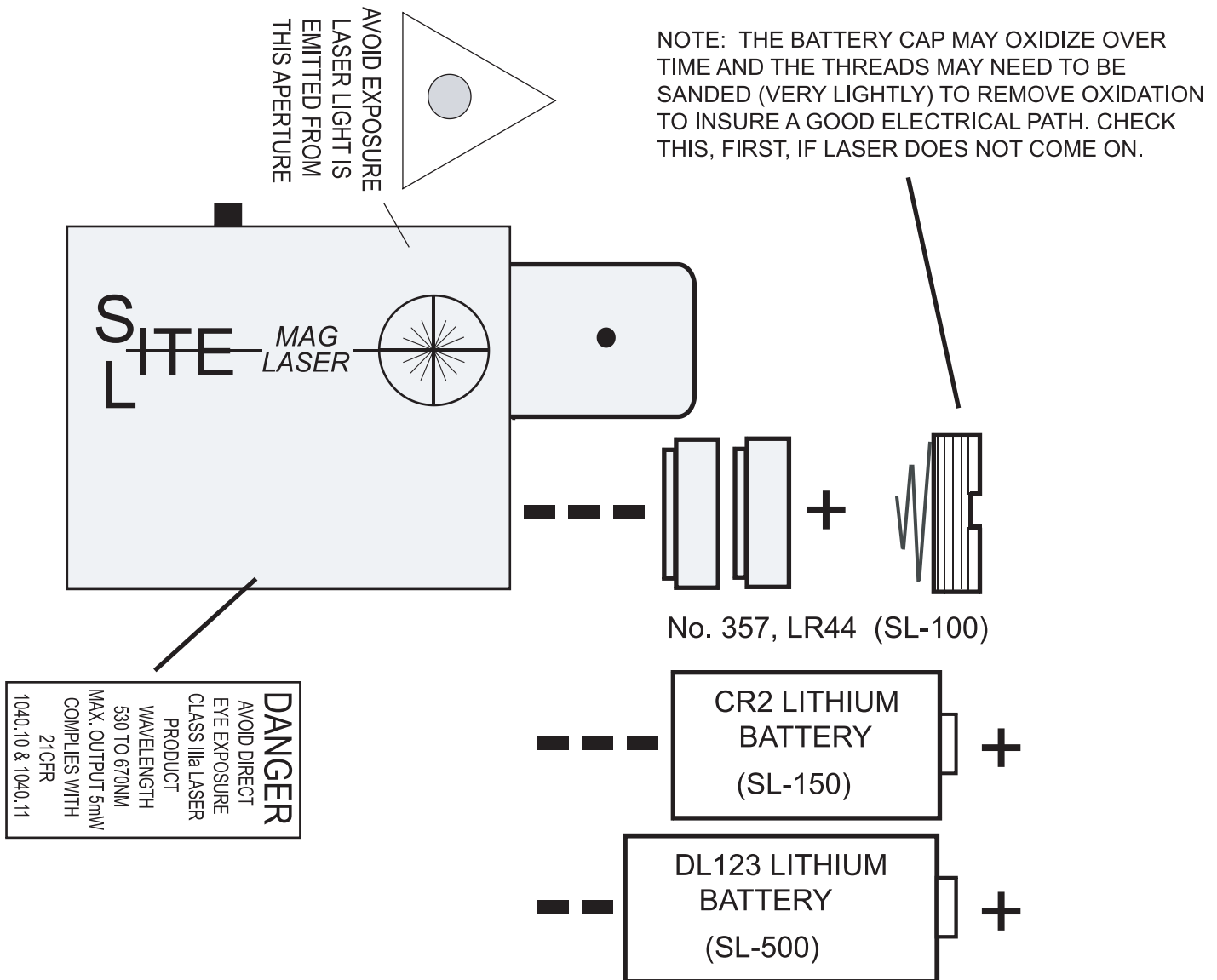
Shotgun Adapter

LASER SAFETY PRECAUTIONS

The SL-100/150/500 Laser Boresighters use a Class IIIa laser with a 530-670 +/- 10NM wavelength and a maximum output of 5.0mW. It is safe to use in normal operation as described in these instructions

The SL-100/150/500 have warning labels in compliance with applicable regulations, as shown.

AVOID DIRECT EYE EXPOSURE
DO NOT LOOK DIRECTLY INTO THE LASER



INSTRUCTIONS FOR

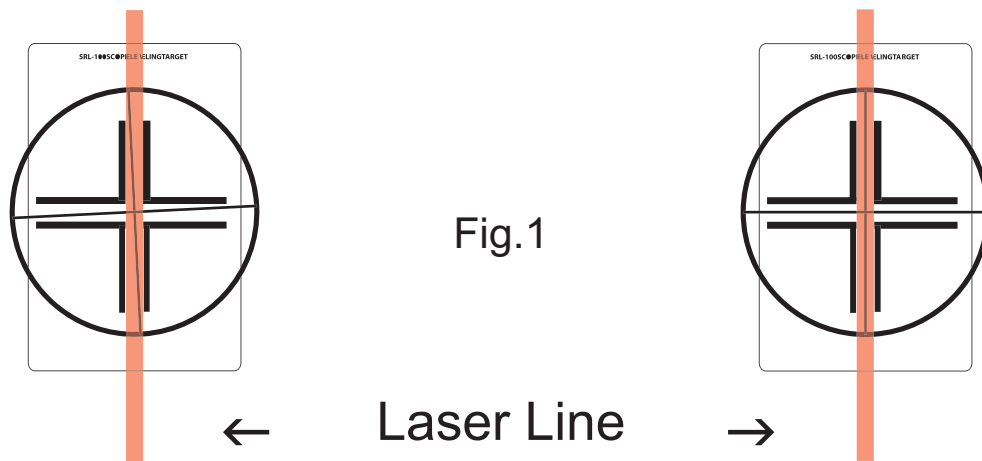
SLR-100 Scope Reticle Leveler

The SRL-100 converts the SL-100/150/500 Laser Boresighters into an extremely accurate scope reticle leveler. It is designed to precisely level your scope crosshair prior to boresighting. The adapter uses a high quality glass lens and simply slips over the laser module housing to change the laser spot into a precise laser line.

**ALWAYS MAKE SURE THAT THE FIREARM IS UNLOADED
PRIOR TO USING ANY BORESIGHTER!**

1. Secure the rifle in a gun vise and adjust the butt of the stock so that it is vertical. (Vertical alignment is a preliminary adjustment at this time and does not require precise accuracy)
2. Loosen the scope rings only until you can start to turn the scope.
3. Insert the boresighter into the muzzle, using the correct o-ring (See Muzzle Adapter Instructions)
4. Slip on the SRL-100 Adapter and rotate, slightly, until it just contacts the boresighter's housing. Do not use any force after contacting the housing.
5. Place the SRL-100 target on a wall between 15 and 25 ft from the muzzle and level the target with the built-in bubble level.

- Turn on the laser . Hold the boresghter housing and turn the adapter until the laser line is vertical and aligned with the crosshairs on the target. Note: You may have to dim the room lights to see the laser line, clearly.
- Rotate the scope & adjust the windage to align the crosshair with the laser line. (Fig. 1)



- Pick up the rifle and aim it, using your normal shooting stance. Note the position of the crosshairs in relation to the laser line. If necessary, readjust the crosshairs to insure that they are vertical & level in your shooting position. Every shooter holds his firearm in a slightly different position so it is important to make this check.
- Tighten the scope rings, insuring that the scope does not move from the level position.
- Proceed with boresighting the firearm.

LASER BORESIGHTING TARGET

